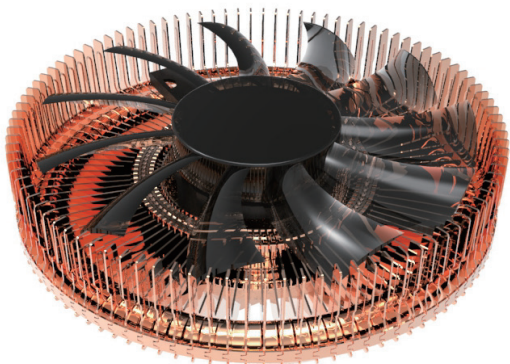


# User's Manual

ZALMAN

**CNPS2X**



**Intel** Socket LGA 1155 / 1156 / 1150 / 775 CPUs

**AMD** Socket FM2 / FM1 / AM3+ / AM3 / AM2+ / AM2 CPU&APUs

To ensure safe and easy installation, please read the following precautions.

[www.ZALMAN.com](http://www.ZALMAN.com)

Ver. 130620

## 1. Precautions

- 1) Avoid inserting objects or hands into the fan while it is in operation to prevent product damage and injuries.
- 2) Do not ingest the Thermal Grease, and avoid its contact with skin and eyes. If contact is made with skin, wash off with water. If ingested or irritation persists, seek medical attention.
- 3) To prevent possible injuries, gloves must be worn while handling this product.
- 4) Excessive force exerted on the fan may cause damage to the fan and/or system.
- 5) Use and keep the product away from reach of children.
- 6) Check the components list and condition of the product before installation. If any problem is found, contact the retailer to obtain a replacement.
- 7) Zalman Tech Co., Ltd. is not responsible for any damages due to overclocking.
- 8) During transportation of the system, the cooler must be removed. Zalman is not responsible for any damages that occur during the transport of a system.
- 9) Product design and specifications may be revised to improve quality and performance.

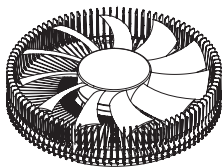
Disclaimer) Zalman Tech Co., Ltd. is not responsible for any damages due to external causes, including but not limited to, improper use, problems with electrical power, accident, neglect, alteration, repair, improper installation, or improper testing.

## 2. Specifications

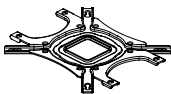
Spec.		Model	CNPS2X
Material		Pure Aluminum & Copper	
Weight		83g	
Dimensions		84(L) x 84(W) x 27(H) mm	
Fan	Bearing	Long Life Bearing	
	RPM	1,500 ~ 2,600RPM $\pm 10\%$	
	Noise Level	17.4 ~ 22.7dBA $\pm 10\%$	
	Voltage	12V	
Thermal Grease [ZM-STG2M]	Contents	1g	
	Temperature Range	-40°C ~ +150°C (-40°F ~ +302°F)	

## 3. Components

### 1) Common Components



Cooler



Backplate



Manual



Side Caps



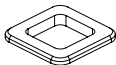
Nuts



Installation Bolts



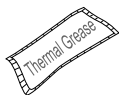
Clip Bolts



Loading Block



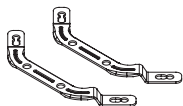
Double-sided  
Tape



Thermal Grease  
(ZM-STG2M)

### 2) Intel Components

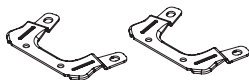
Socket 1155 / 1156 / 1150 / 775



Intel Clip

### 3) AMD Components

Socket FM2/FM1/AM3+/AM3/AM2+/AM2



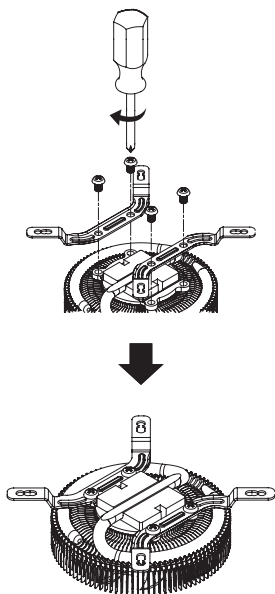
AMD Clip

## 4. Installation

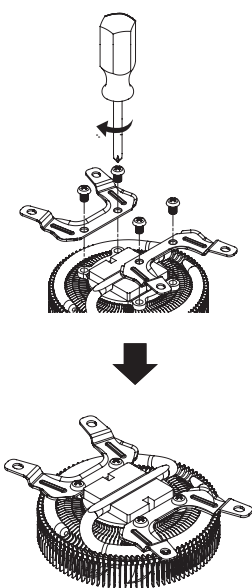
## A. Clip Installation

- ※ Install the clip according to a user socket as shown in the image.  
 - install the clip that fits the socket using the clip bolt

Intel Socket Clip Installation



AMD Socket Clip Installation

**Caution**

Make sure the Clips are bent downwards when mounted on top of the CPU.



Intel Clip

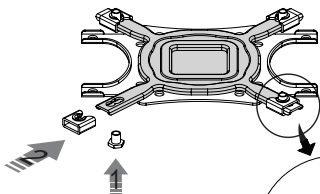


AMD Clip

## B. Nuts and Side Caps

Intel Socket 1156 / 1155 / 1150 / 775

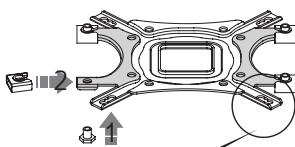
- Insert the Nuts to the Backplate according to the socket type and secure them with Side Caps.



Intel Socket 775  
Intel Socket 1156/1155/1150

AMD Socket  
FM2 / FM1 / AM3+ / AM3 / AM2+ / AM2

- Insert the Nuts to the Backplate according to the socket type and secure them with Side Caps.



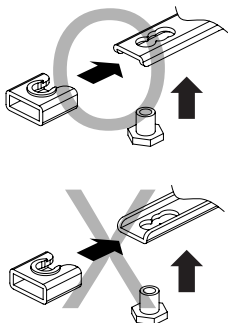
AMD Socket



**Caution**

[Intel Socket]

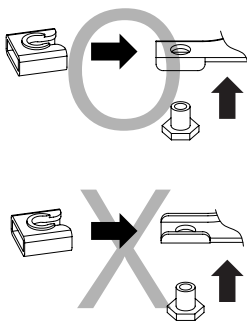
Take note of the orientation of the Nuts and the Side Caps.



**Caution**

[AMD Socket]

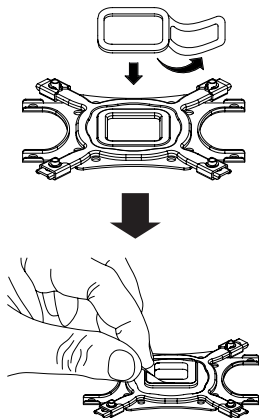
Take note of the orientation of the Nuts and the Side Caps.



## C. Double-sided Tape and Loading Block Installation

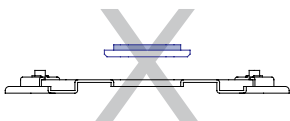
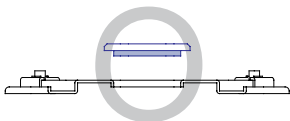
※ Intel Socket 1156/1155/1150 Installation does not require the Loading Block.

Intel Socket 1156 / 1155 / 1150



### ! Caution

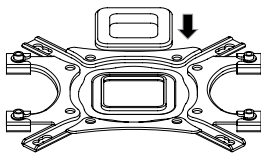
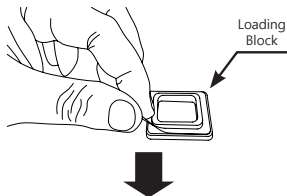
Please note that the sticky side of the Loading Block serves to attach the Loading Block to the backplate.



Intel Socket 775

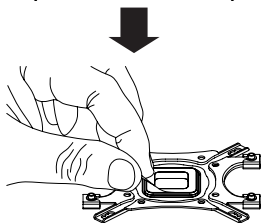
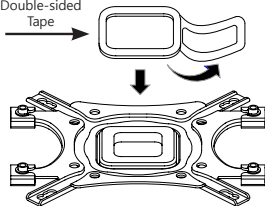
AMD Socket FM2/FM1/AM3+/AM3/AM2+/AM2

- ① Peel off the Loading Block cover and attach it to the Backplate with the sticky side facing the center of the Backplate.



- ② Peel off one side of the Double-sided Tape and attach it with the sticky side facing the Loading block. Then, peel off the top cover.

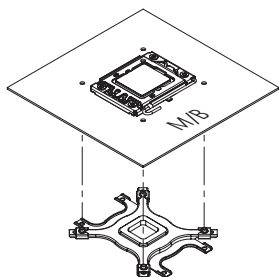
Double-sided Tape



## D. Backplate Installation

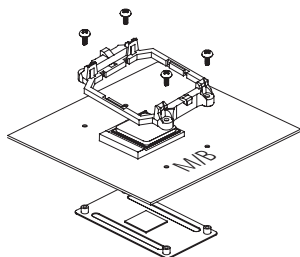
Intel Socket 1156 / 1155 / 1150 / 775

- Align the Backplate's nuts with motherboard's clip support holes, attach it to the back side of the motherboard.

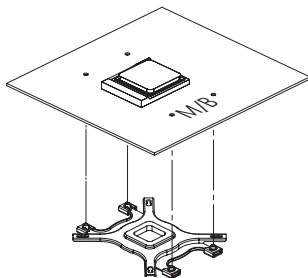


AMD Socket FM2/FM1/AM3+/AM3/AM2+/AM2

- ① Take away the fixed Clip support from the motherboard.

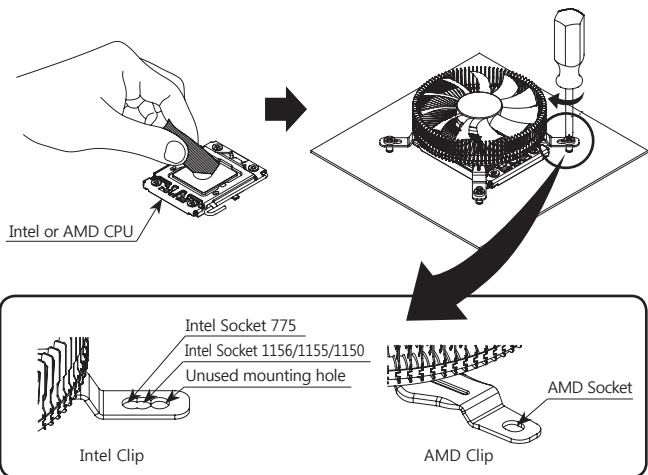


- ② Align the Backplate with motherboard's clip support holes, attach it to the back side of the motherboard.



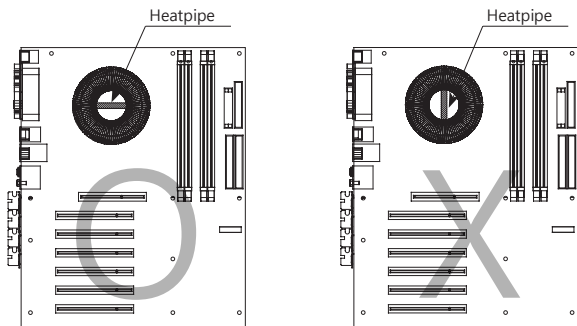
## E. Cooler Installation

- ① Apply a suitable amount of thermal grease on the center of the CPU, then mount the heatsink and fasten the installation bolts based on the CPU socket type.



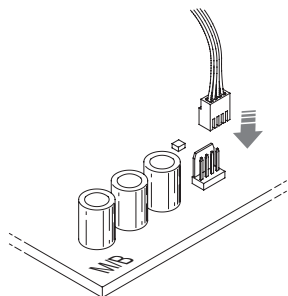
### ! Caution

When installing the heatsink on a tower case, make sure the heatpipe on the base is parallel to the ground, as installing it perpendicularly may limit the cooling performance.





- ② Connect the cooler's 4-pin connector to the motherboard's CPU Fan header.

**Caution**

After installing, be sure to activate the PWM control mode in BIOS on the motherboard.

# McGrp.Ru



## Сайт техники и электроники

Наш сайт [McGrp.Ru](http://McGrp.Ru) при этом не является просто хранилищем [инструкций по эксплуатации](#), это живое сообщество людей. Они общаются на форуме, задают вопросы о способах и особенностях использования техники. На все вопросы очень быстро находят ответы от таких же посетителей сайта, экспертов или администраторов. Вопрос можно задать как на форуме, так и в специальной форме на странице, где описывается интересующая вас техника.